

Family Quest Challenge  
BIBLICAL TREASURE WORKSHEETS  
Mark

Mark 1

**Where in the world?**

This river is the principal river in the Holy Land, beginning in the snows of Mount Hermon and ending in the Dead Sea. The river's closest point to Jerusalem is about 20 miles away. The person described in chapter 1, verses 1-8 would baptize people here.

What is this river's name?





## Mark 3

### **Name Scramble**

Read Mark chapter 3 focusing on verses 13-19. These verses describe Jesus appointing twelve apostles. The training of these apostles included instruction and practice in various forms of ministry, as well as continuous association and intimate fellowship with Jesus himself. Later, one of these twelve will betray Jesus. Unscramble the letters below to learn his name and enter this name into the Ultimate Puzzle.

### **Dusaj cairtosi**



Mark 4

## Order of Events

Put the events from Mark chapter 4 in order below. Put the letter in front of each event in the boxes in order. This will spell a word which you can enter into the Ultimate Puzzle.

Events

|          |   |
|----------|---|
| <b>E</b> | Jesus explains the parable of the sower to his Disciples              |
| <b>E</b> | Jesus tells a parable about the smallest seed                         |
| <b>S</b> | Jesus begins to teach a crowd along the shore from a boat in the lake |
| <b>D</b> | A storm occurs while Jesus and his Disciples are in a boat            |

Order

|          |  |
|----------|--|
| <b>1</b> |  |
| <b>2</b> |  |
| <b>3</b> |  |
| <b>4</b> |  |

## Mark 5

# Crack the Code

Use the code below to decipher what Jesus told a synagogue ruler in Mark chapter 5. Enter the last word in the Ultimate Puzzle.

|   |   |   |   |   |   |   |   |   |    |    |    |    |    |    |    |    |    |    |    |    |    |    |    |    |    |
|---|---|---|---|---|---|---|---|---|----|----|----|----|----|----|----|----|----|----|----|----|----|----|----|----|----|
| A | B | C | D | E | F | G | H | I | J  | K  | L  | M  | N  | O  | P  | Q  | R  | S  | T  | U  | V  | W  | X  | Y  | Z  |
| 1 | 2 | 3 | 4 | 5 | 6 | 7 | 8 | 9 | 10 | 11 | 12 | 13 | 14 | 15 | 16 | 17 | 18 | 19 | 20 | 21 | 22 | 23 | 24 | 25 | 26 |

|   |   |    |    |   |    |
|---|---|----|----|---|----|
| " | 4 | 15 | 14 | ' | 20 |
| " |   |    |    | ' |    |

|   |   |
|---|---|
| 2 | 5 |
|   |   |

|   |   |    |   |   |   |   |
|---|---|----|---|---|---|---|
| 1 | 6 | 18 | 1 | 9 | 4 | ; |
|   |   |    |   |   |   | ; |

|    |    |    |    |
|----|----|----|----|
| 10 | 21 | 19 | 20 |
|    |    |    |    |

|   |   |    |   |   |    |   |   |   |
|---|---|----|---|---|----|---|---|---|
| 2 | 5 | 12 | 9 | 5 | 22 | 5 | . | " |
|   |   |    |   |   |    |   | . | " |



Mark 6

## By The Numbers

Read Mark 6, focusing on verses 37-44, to find the numbers to help you solve the math problem below. Spell the answer to enter it into the Ultimate Puzzle.

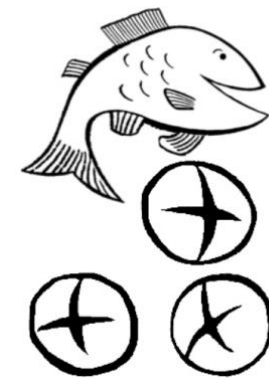
Jesus's disciples thought that it would take \_\_\_\_\_ months of a man's wages to feed everyone who was gathered. (A)

The disciples found \_\_\_\_\_ loaves and \_\_\_\_\_ fish.  
(B) (C)

The disciples picked up \_\_\_\_\_ basketfuls of broken pieces of bread and fish.  
(D)

The number of men who were able to eat was \_\_\_\_\_ thousand.  
(E)

$$A - B - C + D - E = \underline{\hspace{2cm}}$$



## Mark 7

### Jesus's words

Read Mark chapter 7 to discover an Aramaic word that Jesus says to a man while healing him that means “Be opened”. This man was deaf and could barely talk until Jesus spoke this word to him.

Enter this word into the Ultimate Puzzle.

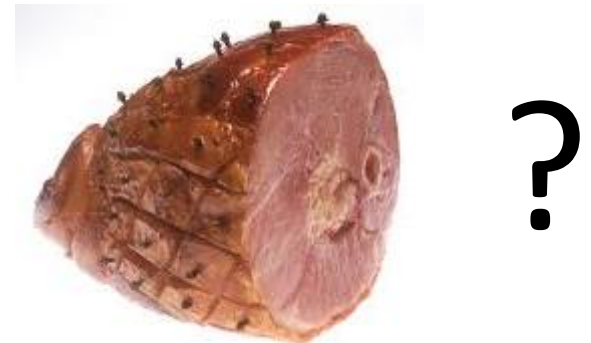




Mark 8

## Rebus puzzle

Read Mark 8 in your Bible to help you solve this rebus and learn something that Jesus asks of his disciples. Enter the third word in the Ultimate Puzzle.

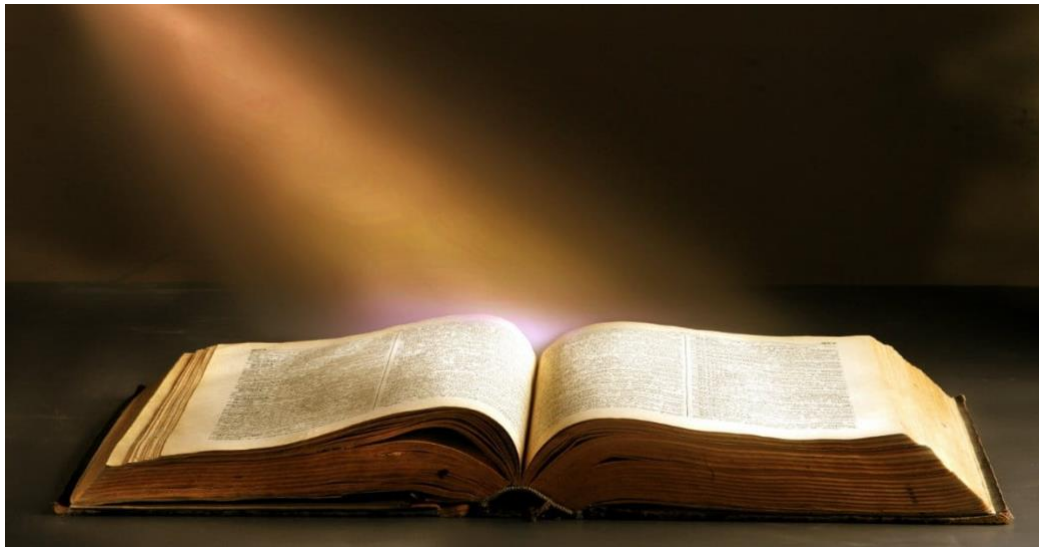


## Mark 9

# Bible Symbol

Read Mark Chapter 9 focusing on the description of Jesus's transfiguration in verses 2-13. A voice comes down from an object in the sky saying "This is my son, whom I love. Listen to him!". This object is frequently used as a symbol of God's presence to protect and guide. What is this object?

See also Matthew 17:5.




Mark 10

## Route Cypher

Solve the route cypher to discover a verse from Mark chapter 10. Enter the sixth word of the cypher into the Ultimate Puzzle.

To solve the cypher, read from the bottom to the top in each column beginning at the left

|   |   |   |   |   |   |   |
|---|---|---|---|---|---|---|
| R | D | E | E | N | A |   |
| O | O | N | H | N | R |   |
| F | G | I | T | A | A |   |
| E | T | O | E | M | P |   |
| R | A | J | G | T | E |   |
| E | H | S | O | E | S |   |
| H | W | A | T | L | T | E |
| T | E | H | D | R | O | T |

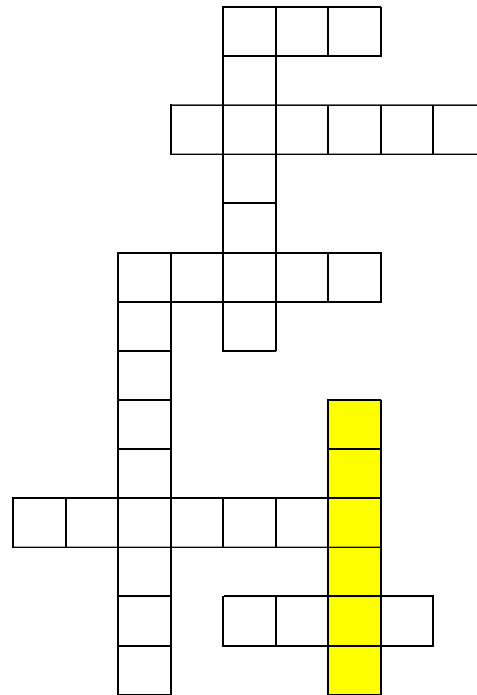


Mark 11

## Words to Treasure

Insert the words below, found in Genesis chapter 40, into the word puzzle.

- disciples
- colt
- temple
- fig
- prayer
- baptism
- forgive
- doves



Don't forget to enter the highlighted word into the Ultimate Puzzle!

## Mark 12

# Jesus's teachings

Read Mark chapter 12, focusing on verses 28-34 which talk about “The Greatest Commandment”. Jesus says that the most important commandment is to “love the lord your God with all your heart and with all your soul and with all your mind and with all your strength.” (Read Deuteronomy 6:4 in the Old Testament to learn more about this commandment.)

Jesus says that the second most important commandment is to “Love your \_\_\_\_\_ as yourself.” Fill in the blank and enter that word into the Ultimate Puzzle.



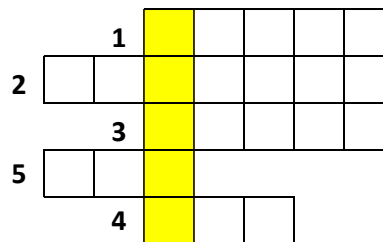
Mark 13

## End of the Age

Read Mark 13 and fill in the answers based on the clues.

1. \_\_\_\_\_: One of the disciples pointed out buildings made of this material to Jesus.
2. Jesus and his disciples were sitting on the Mount of \_\_\_\_\_.
3. In Mark 13:9, Jesus says “You must be on your \_\_\_\_\_.”
4. \_\_\_\_\_: A signal of the end of the age is that this will darken.
5. Jesus says in Mark 13:26 that the Son of \_\_\_\_\_ will come in the clouds.

Enter the answers into the following puzzle to discover the highlighted word, which you should enter into the Ultimate Puzzle.



## Mark 14

### Who am I?

- I am one of Jesus's twelve disciples.
- Jesus asked me if I was asleep and if I would keep watch for one hour while we were in Gethsemane.
- I disowned Jesus three times before the rooster crowed twice, just as Jesus said I would.
  - Because of this, I broke down and wept.



Enter my name into the Ultimate Puzzle.

Mark 15

## Where in the World?

The name of this place, also known as Calvary, means “the place of the skull” and was where Jesus was crucified. Read Mark 15 and unscramble the word below to learn the name of this place.

Don't forget to enter it into the Ultimate Puzzle.

**oaglhog**





Mark 16

## Code Breaker

Use the code below to decipher what a man said to the women who came to anoint Jesus's body in Mark Chapter 16. Enter the third word into the Ultimate Puzzle.

|   |   |   |    |   |   |   |   |   |   |   |   |   |   |   |   |   |   |   |   |   |   |   |   |   |   |
|---|---|---|----|---|---|---|---|---|---|---|---|---|---|---|---|---|---|---|---|---|---|---|---|---|---|
| A | B | C | D  | E | F | G | H | I | J | K | L | M | N | O | P | Q | R | S | T | U | V | W | X | Y | Z |
| ! | @ | # | \$ | % | ^ | & | * | ( | ) | ? | " | } | { | [ | ] | \ | > | < | ∞ | ☼ | ↔ | ⬆ | ◇ | ● | ∧ |

|   |   |   |   |   |   |   |   |   |   |   |   |   |   |   |   |   |   |   |   |   |   |
|---|---|---|---|---|---|---|---|---|---|---|---|---|---|---|---|---|---|---|---|---|---|
| * | % | * | ! | < | > | ( | < | % | { | ! | * | % | ( | < | { | [ | ∞ | * | % | > | % |
|   |   |   |   |   |   |   |   |   |   |   |   |   |   |   |   |   |   |   |   |   |   |



# Ultimate Puzzle: Mark 16:15

He said to them, "Go into all the world and...

7 3 1 13 6 5 15 2 14 8 16

12 11 10 4 9

r a h t h o o e w o a e a i . "

□ = space

**\* Fill in all the answers from the chapters in the correct boxes above**